

QUICK START GUIDE



Pour la traduction française, voir le CD
Para traducción en castellano, vea el CD
Per la traduzione in italiano, vedere il CD
Für die deutsche Übersetzung, siehe die CD

For full Installation and Operation Manuals, see the CD

FIRST INSTALL YOUR BATTERY

EL-USB-1, EL-USB-1-LCD, EL-USB-2, EL-USB-2+, EL-USB-2-LCD, EL-USB-2-LCD+, EL-USB-3, EL-USB-4, EL-USB-5, EL-USB-CO, EL-USB-CO300, EL-USB-TC, EL-USB-TC-LCD

Before using the data logger you will need to insert the 3.6V 1/2AA battery provided, following the instructions below. Replacement batteries available from www.lascarelectronics.com, PN: BAT 3V6 1/2AA.



EL-USB-1 PRO

Before using the data logger you will need to insert the 3.6V 2/3AA High Temperature battery provided, following the instructions below. Replacement batteries available from www.lascarelectronics.com, PN: BAT 3V6 2/3AA H TEMP.



EL-USB-1-RCG BATTERY IS PREINSTALLED

To charge the battery connect to USB port until green LED shows.

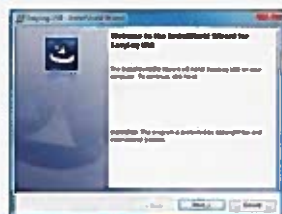
2

THEN INSTALL YOUR SOFTWARE & USB DRIVER

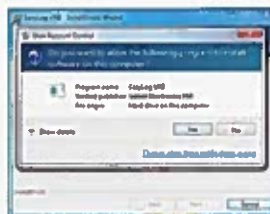
Windows™ 2000/XP/VISTA/7



1. Insert the EL-USB-USB CD into the CD drive of your computer. If the CD does not automatically load, navigate to the CD and double click "Setup"



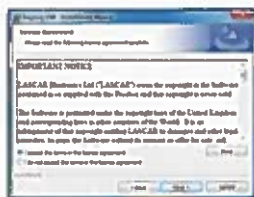
2. Click "Next"



5. Click "Yes"



6. Click "Finish"



3. Read the "IMPORTANT NOTICE", select "I agree" and "Next"



4. Click "Install"



7. Click "Install"



8. You have successfully installed the necessary software and driver for your EL-USB data logger. An "EasyLog USB" icon will be placed on your desktop.

3

YOUR DATA LOGGER IS READY FOR USE

- Ensure the battery is correctly installed.
- Insert the data logger into an available USB port on your PC.
- Double click on the EasyLog USB icon on your Windows™ desktop. This will load the configuration software. Setup the data logger for a new log, download a data logger that has been recording, view previously saved data in graph format and check the current status of the attached data logger (including the serial number).
- When setup is complete, the data logger should be removed from the USB port to begin recording. If you would like advice on how best to use the data logger for a particular application, please contact your nearest Lascar representative.
- **Do not leave your data logger in the USB port as this will cause some of the battery capacity to be lost** (with the exception of EL-USB-1-RCG; see '1. First Install Your Battery' for further information).



• Set-up, stop or view previously saved data



• Name your logger and select a sample rate