



# A 1313 Power View

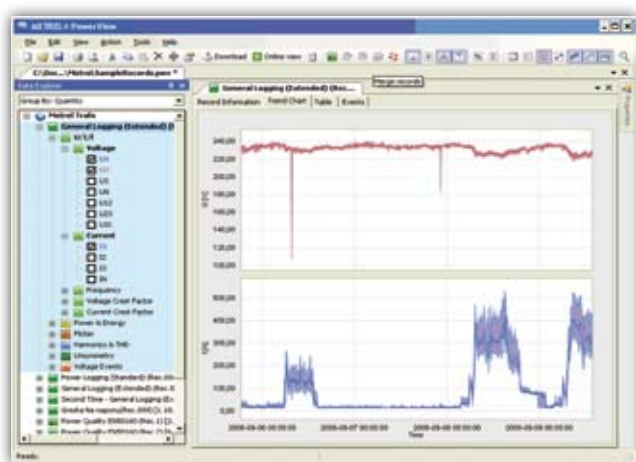
**NEW!**



Powerful platform for downloading, analysing recorded data and creating power quality test reports.

Compatible with Metrel new generation power quality analysers:

- MI 2492 PowerQ
- MI 2392 PowerQ *Plus*
- MI 2592 PowerQ4 **NEW**

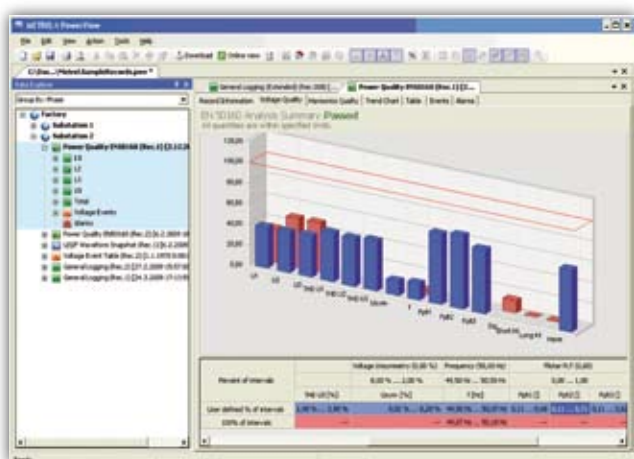


**Figure 1.** Data can be quickly organized and analysed

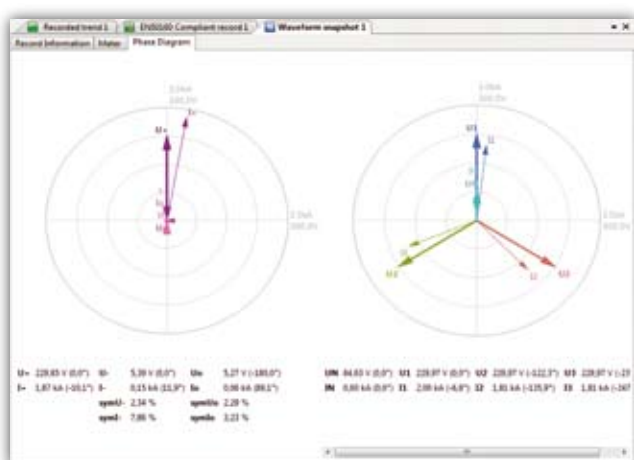
## Main features

Power View PC Software platform contains a package of functionalities needed for profound evaluation of power quality phenomena and creation of complex test reports.

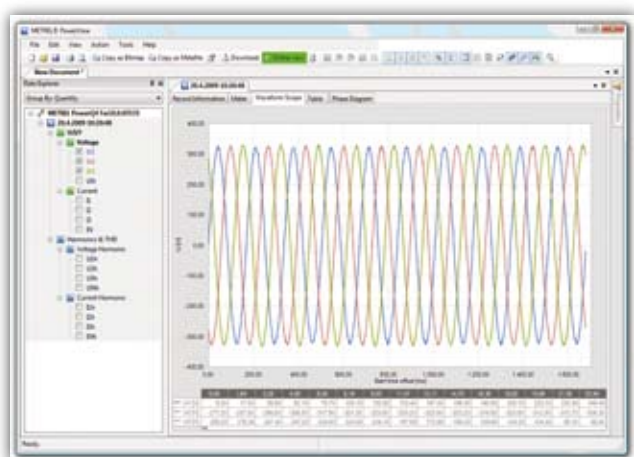
- Data download
- Windows Explorer - like three structure
- Predefined EN 50160 power quality report
- Data merge
- Transfer of test results to other applications (MS Excel, MS Word, etc.)
- Filtering of recorded data
- Different views of selected data are available instantly and organized into various forms like trend graph, chart view, general data information, etc.
- Recorded data can be organized into multiple sites and different sub-site locations
- Special tool for repair of recorded data has been integrated to avoid loss of data at communication difficulties between the PC and the power quality analyser



**Figure 2.** Generates EN 50160 reports



**Figure 3.** Phase diagram and unbalance



**Figure 4.** On-line view

## Connectivity

PowerView supports all new generation Metrel power quality analysers.

- USB and RS232 communication ports are supported with download speeds up to 1 Mbit/sec
- Compatible with:  
MI 2492 PowerQ,  
MI 2392 PowerQ <sup>Plus</sup>,  
MI 2592 PowerQ4

## Data management

Multiple data records can be displayed and analyzed simultaneously.

- Merge different logging data into one measurement
- Synchronize data recorded with different instruments with time offsets
- On-line communication with power quality analyser can be established

## User snapshots

Users can make snapshots of configured charts and views.

- Snapshots of configured charts and selected signals can be saved to disk for later use.
- Originally created XML files can be opened and evaluated in various consumer programmes.

## Other features

Multiple forms of recorded data are supported:

- Logging,
- Waveforms,
- Harmonics,
- Phase diagram
- Symmetry
- EN50160 analysis
- All data can be simultaneously displayed in a tabular form
- Sorting and filtering of events and alarms
- Drag and drop functionality has been integrated
- Custom chart annotations and remarks
- Multiple site data presentation, data merging and synchronization
- Export to tabular and CSV data formats



**Measuring and Regulation Equipment Manufacturer**

METREL d.d.  
Ljubljanska 77  
SI-1354 Horjul  
Tel: + 386 (0)1 75 58 200  
Fax: + 386 (0)1 75 49 226  
E-mail: [metrel@metrel.si](mailto:metrel@metrel.si)  
<http://www.metrel.si>

Note! Photographs in this catalogue may slightly differ from the instruments at the time of delivery.  
Subject to technical change without notice.