

### A. System Requirements

To use **UT60E Interface Program**, you need the following hardware and software:

- An IBM PC or equivalent computer with 80486 or higher processor and 600 x 800 pixel or better monitor.
- Microsoft Windows 95 or above.
- At least 8MB of RAM.
- At least 8MB free space in hard drive.
- Can access to a local or a network CD-ROM.
- A free serial port.
- A mouse or other pointing device supported by Windows.

### B. Installing UT60E Interface Program

To install **UT60E Interface Program**, please follow below procedure:

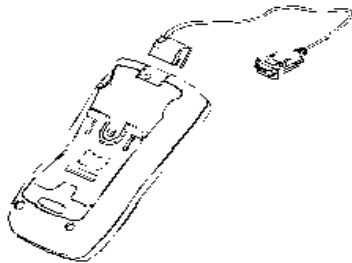
Before install the interface program, make sure that the computer is running the Window 95 or above operating system.

1. -Insert the provided CD-ROM into CD-ROM drive.  
-Double-click the My Computer icon from the Windows desktop.  
-Locate the CD-ROM drive from the window, double-click the drive letter to display the folder of UT60E.  
-Double-click UT60E to display the contents of the folder.  
-Double-click the file Setup.Exe.
2. Follow the on-screen installation instructions.
3. The installation program will create a **UT60E Interface Program** folder.  
You will be prompted to select the kind of Program Folder you want to install; you should select “**UT60E Interface Program**”.


### C. Getting Started with UT60E Interface Program

To run the **UT60E Interface Program**, please do the followings:

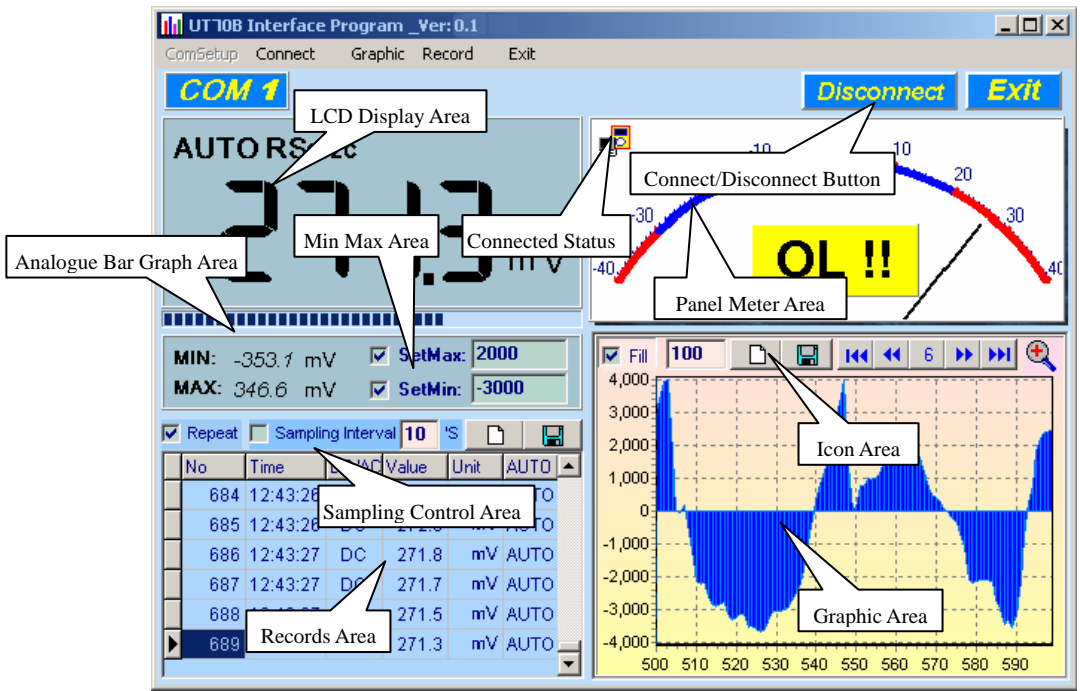
1. Insert the supplied RS232C Interface Cable into the slot at the back of the meter and properly connect the other end of the cable to the serial port of computer as shown on below **figure 1**.



(figure 1)

2. From the Windows **Start** menu, choose **Programs > UT60E Interface Program > UT60E**
3. Press **COMSetup** to select corresponding COM 1 / 2 / 3 / 4.
4. Press **Connect** from menu bar to start the connection, the icon  will be displayed.

Below is the full screen of the software shown on the computer (see **figure 2**):

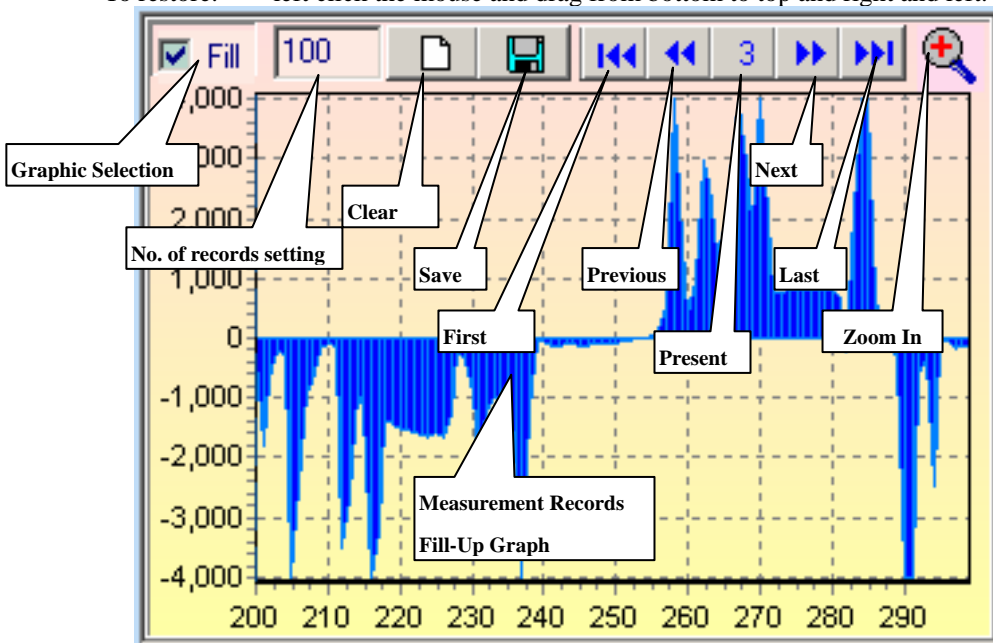


(figure 2)

**D. Graphical Operations (see figure 3)**

During the connection, you can select the following functions by clicking the corresponding icon or the menu bar:

- Fill:** Click the box to select “fill-up graph” or unclick to select “line graph”.
- Record:** Setting the number of record to be shown on graphic.
- Clear:** To clear all the current records’ graphics permanently.
- Save:** To save current graphic into BMP format. The default file name is C:\DATA1.BMP”.
- First:** Go to the first graphic.
- Previous:** Go to the previous graphic.
- Next:** Go to the next graphic.
- Last:** Go to the last graphic.
- Zoom In:** To enlarge part of the graphic.  
 To enlarge: left click the mouse and drag from top to bottom and left to right.  
 To restore: left click the mouse and drag from bottom to top and right and left.

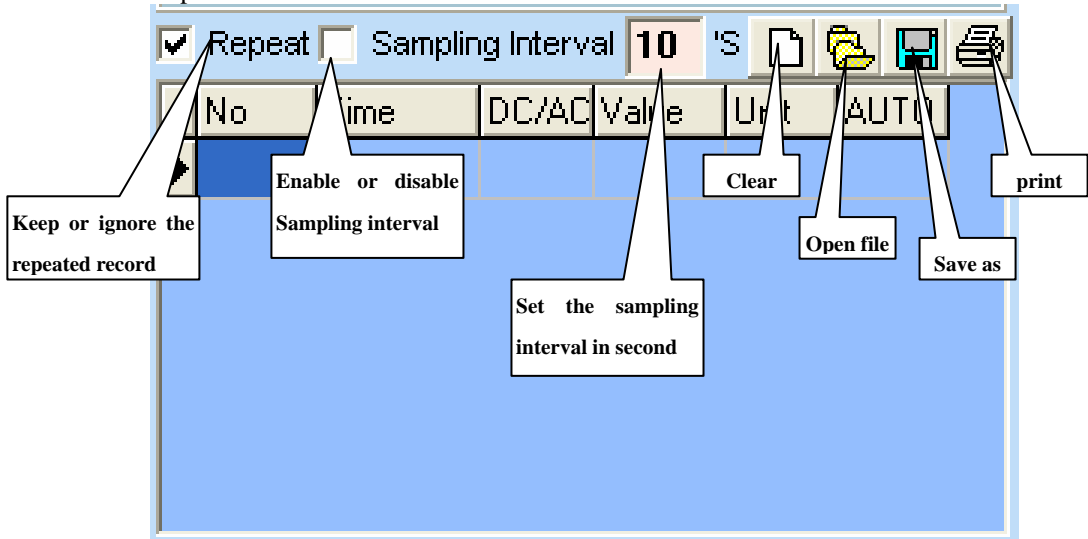


(figure 3)

**E. Data Recording Operations (see figure 4)**

During the connection, you can select the following functions by clicking the corresponding icon or the menu bar:

- Repeat:** Click the box to keep the repeated record, or unclick the box to ignore the repeated record. The repeated records will be shown in graphic no matter what the selection is.
- Sampling Interval:** Click to enable sampling interval function, or unclick to disable the function. Enter the sampling interval's time, the unit is second.
- Clear:** To clear all the current records permanently.
- Open file:** To read records from old file (\*.db).
- Save as:** To save all the current records to file (\*.txt, \*.xls, \*.db).
- print:** To print the current records.



(figure 4)

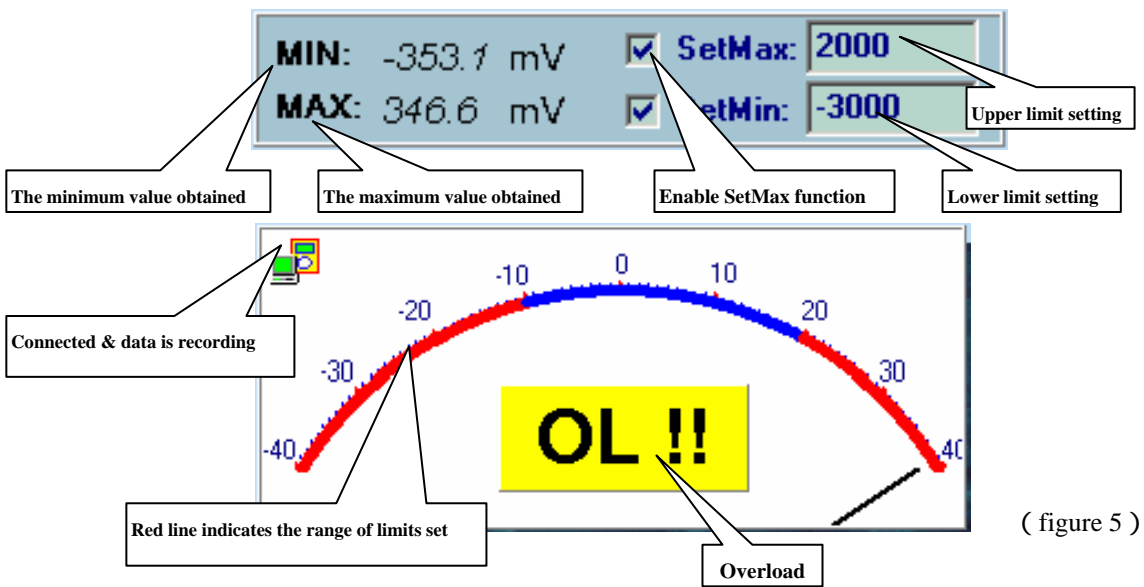
**F. Max Min Operations (see figure 5)**

- MIN:** The maximum value obtained
- MIN:** The minimum value obtained.
- SetMax:** Click to enable the SetMax function or unclick to disable. Enter the upper limit value in integer. It will only compare the current value obtained to the upper limit in integer, it does not identify range or function,
- SetMin:** Click to enable the SetMin function or unclick to disable. Enter the lower limit value in integer. It will only compare the current value obtained to the upper limit in integer, it does not identify range or function.



The Meter is connected properly to the computer and data is recording.

**OL!!** Overload, the recorded value exceeds the SetMax and SetMin value. It will be flashing and the computer will sound if loudspeaker is installed.



(figure 5)

### G. Maximum Number of Records Setting

After testing, below list out a normal maximum number of records that a computer can be saved for user's reference. The computer will slow down if it exceeds the maximum.

80486 computer: 1000 to 5000 records

80586 computer: 5000 to 50000 records

Pentium 2 or up: 50000 records up

To set the maximum number of records from the **"Record"** of the menu bar.

#### Remarks:

1. If abnormal digits or symbols were found after installation, please remove font "UNIT-A2" and then install new font set from "FONT" directory on the provided CD-ROM.
2. The software designed to display the current measured value from the Meter. When the data hold, Max or Min functions are enabled, it is normal that the Meter displayed value difference from the computer due to the Meter display has already locked.
3. No special notice or free replacement will be provided when update version is issued. You could download the most updated version from the web site "[www.uni-trend.com](http://www.uni-trend.com)".

\*\*END\*\*

This operating manual is subject to change without notice.

© Copyright 2001 Uni-Trend International Limited. All rights reserved.

#### Manufacturer:

Uni-Trend International Limited

Rm901, 9/F, Nanyang Plaza

57 Hung To Road, Kwun Tong

Kowloon

Hong Kong

Tel.: (852) 2950 9168

Fax.: (852) 2950 9303

Email: [info@uni-trend.com](mailto:info@uni-trend.com)

<http://www.uni-trend.com>